

# Park Boulevard Corridor

Pedestrian, Bicycle and School Safety Study

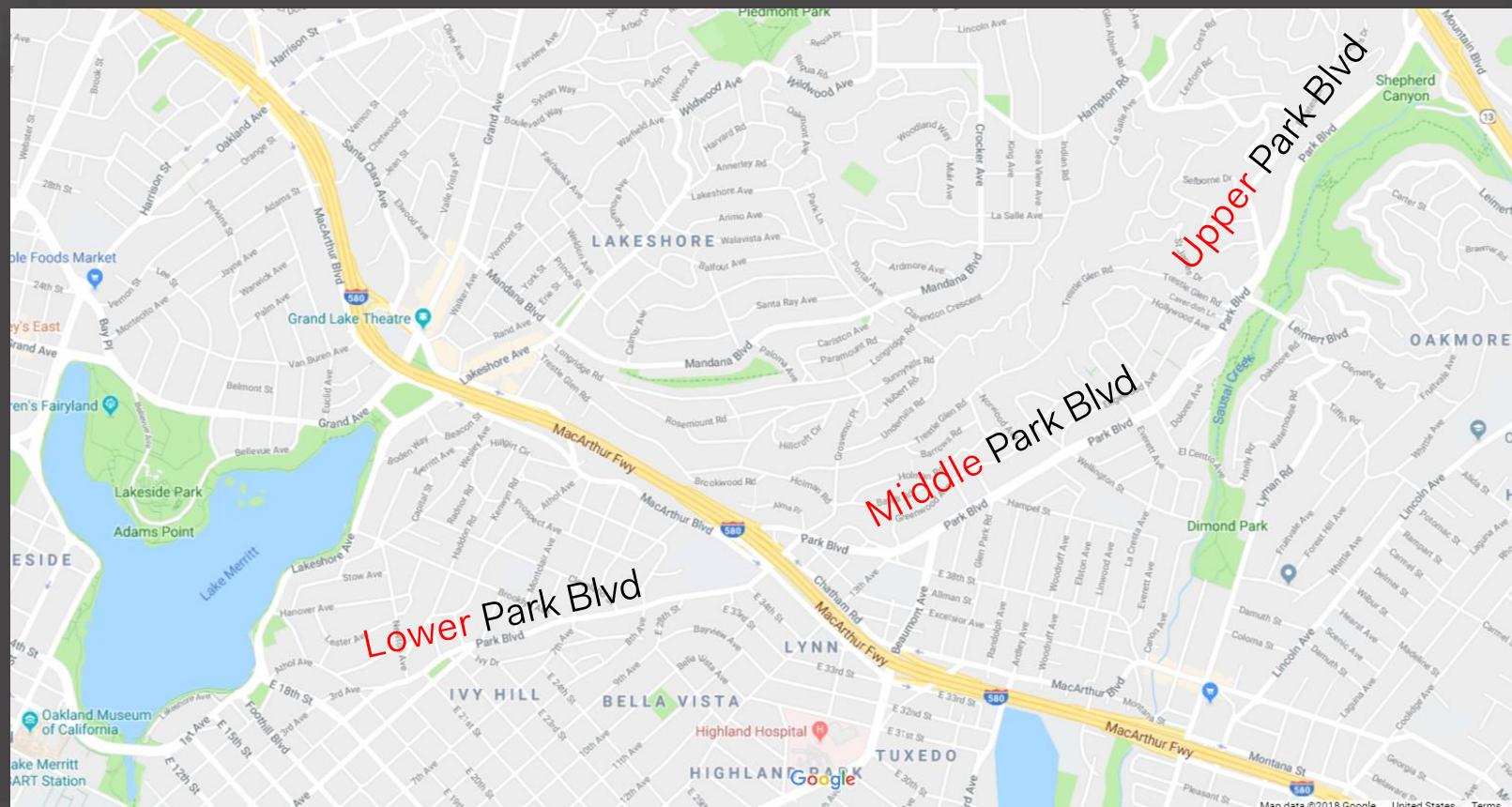
Park Boulevard Presbyterian Church  
January 24, 2018



City of  
Oakland

# Park Boulevard Corridor Study | Agenda

1. Meeting goals
2. Study history & status
3. Summary of comments
4. Status of three segments
  - Middle Park (meeting focus)
  - Lower Park
  - Upper Park
5. Next steps
6. Questions & comments



# Meeting goals

- 1. Present study history
- 2. Communicate status of three segments
- 3. Obtain community feedback on Upper & Middle Park options\*

\* Community meeting focused on Lower Park is next week (Jan 31, 2018 at Cleveland Elementary School).



Park Boulevard Corridor | Pedestrian, Bicycle and School Safety Study  
Wednesday, January 24, 2018 | Park Boulevard Presbyterian Church

### Questions or Comments

Name: \_\_\_\_\_ Email: \_\_\_\_\_

Address or Organization: \_\_\_\_\_

- ☐ Traffic study
- ☐ Middle Park road diet
- ☐ Upper Park
- ☐ Process
- ☐ Safety concerns
- ☐ Middle Park spot impr
- ☐ Lower Park (bring 1/31/18)

Comment/Question: \_\_\_\_\_  
\_\_\_\_\_  
\_\_\_\_\_  
\_\_\_\_\_

# Study History

## Large community-wide meetings

- Nov 16, 2016 (Park Blvd Presbyterian Church)
- Nov 17, 2016 (F.M. Smith Recreation Center)

## Smaller group meetings

- Oakland High School/Bike East Bay (Jan 17, 2017)
- Glenview Neighborhood Assn (Mar 1, 2017)
- Lakeshore Homes Assn (Apr 27, 2017)
- Glenview Neighborhood Assn (Aug 2, 2017)
- Field workshop with Corpus Christi School (Sep 20, 2017)

## Data collection & design concept evaluations



*Park Blvd & Trestle Glen Rd*



# Study History | What We Heard

## Most frequent community concerns

- Pedestrian safety, especially at school crossings
- High vehicle speeds
- Add/don't add bicycle lanes
- Maintain/reduce number of traffic lanes
- Potential traffic diversion into neighborhoods



*Park Blvd & E 38<sup>th</sup> St*

# Study History | Recent Accomplishments

1. Obtained \$2.3M grant to improve two intersections at schools
2. Improved Beaumont Ave for pedestrian safety near school
3. Crossing guards
4. Reviewed what we heard at meetings in 2016-17
5. Studied best ways to address top concerns:
  - Pedestrian safety, esp. at schools
  - Vehicle speeds
6. Moving forward with Lower Park

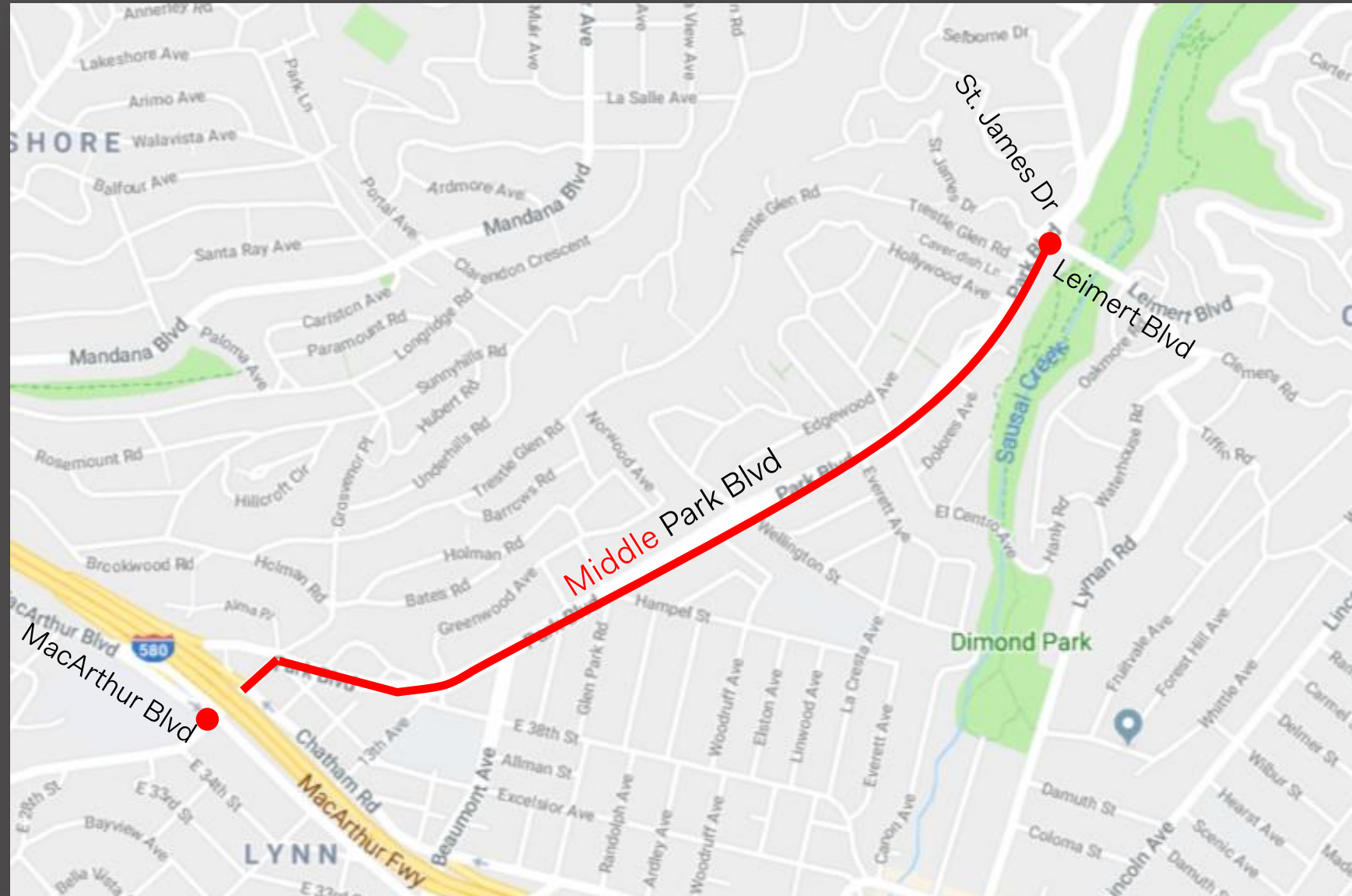


*Beaumont Ave & Park Blvd*

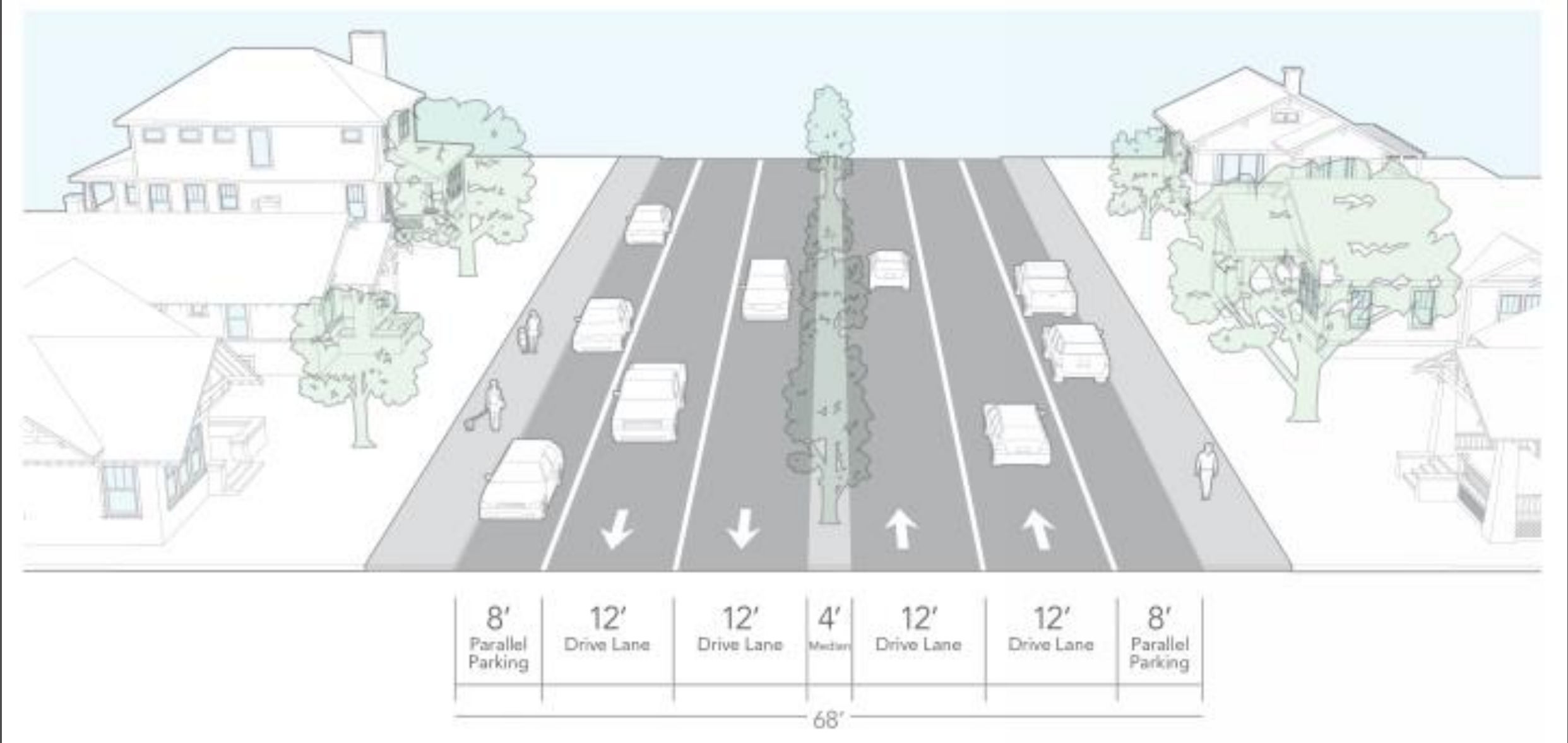


# Middle Park Boulevard

- Many businesses
- Many driveways & intersections



# Middle Park | Existing Conditions





# Middle Park | Challenges

## Challenges:

- Increase pedestrian safety
- Reduce vehicle speeds

## Issues:

- Vehicles are not stopping for pedestrians in crosswalks
- Multiple threat

## Approaches:

- Corridor approach
- Spot improvements



*Park Blvd & Wellington St*

# Middle Park | Corridor Approach

3 scenarios:

1. New signals @ 5 intersections
2. Paint only lane reduction
3. Lane reduction with 5 new signals



*Park Blvd & Wellington St*



# Middle Park | Corridor Approach

## Scenario #1:

New signals @ 5 intersections, maintaining 4 traffic lanes

Results: Controlled pedestrian crossings @ 11 intersections:

- Partially addresses vehicle speeds
- Partially addresses multiple threats
- Doesn't address all intersections
- Doesn't address bike safety

Assessment: Possible solution



*Park Blvd & Park Blvd Way*



# Middle Park | Corridor Approach

## Scenario #2: Paint only lane reduction

### Results:

- Addresses multiple threats
- Reduces vehicle speeds
- Difficult turning left to/from side streets – too few gaps in traffic
- Diversion away from Park Blvd
- Increases travel times

Assessment: Staff does not support



*Park Blvd & Greenwood Ave*

# Middle Park | Corridor Approach

## Scenario #3: Lane reduction with 5 additional signals

### Results:

- Addresses multiple threat
- Reduces vehicle speeds
- Travel times are similar to today
- Unsignalized intersections become right turn in/out only

### Assessment: Possible solution

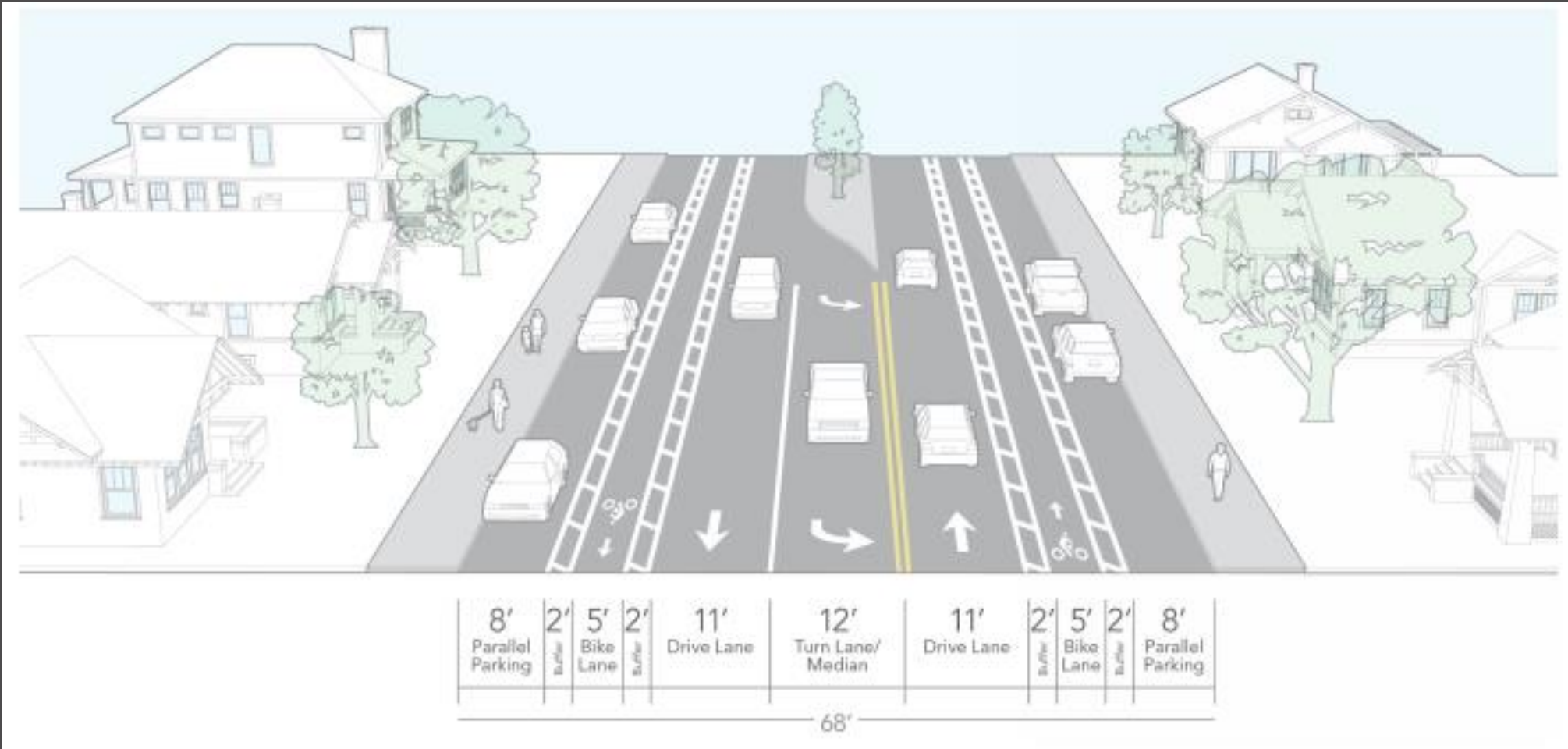


*Park Blvd & Greenwood Ave*



# Middle Park | Corridor Approach

Scenario: Lane reduction with 5 signals





# Middle Park | Corridor Approach

Challenges: Increase pedestrian safety,  
reduce vehicle speeds

## Conclusion:

- Lane reduction + 5 traffic signals fully responds to improving pedestrian safety and reducing speeds
- Community meetings to plan neighborhood access changes
- Difficult funding picture
- Spot improvements in meantime



*Park Blvd & Wellington St*

# Middle Park | Spot Improvements

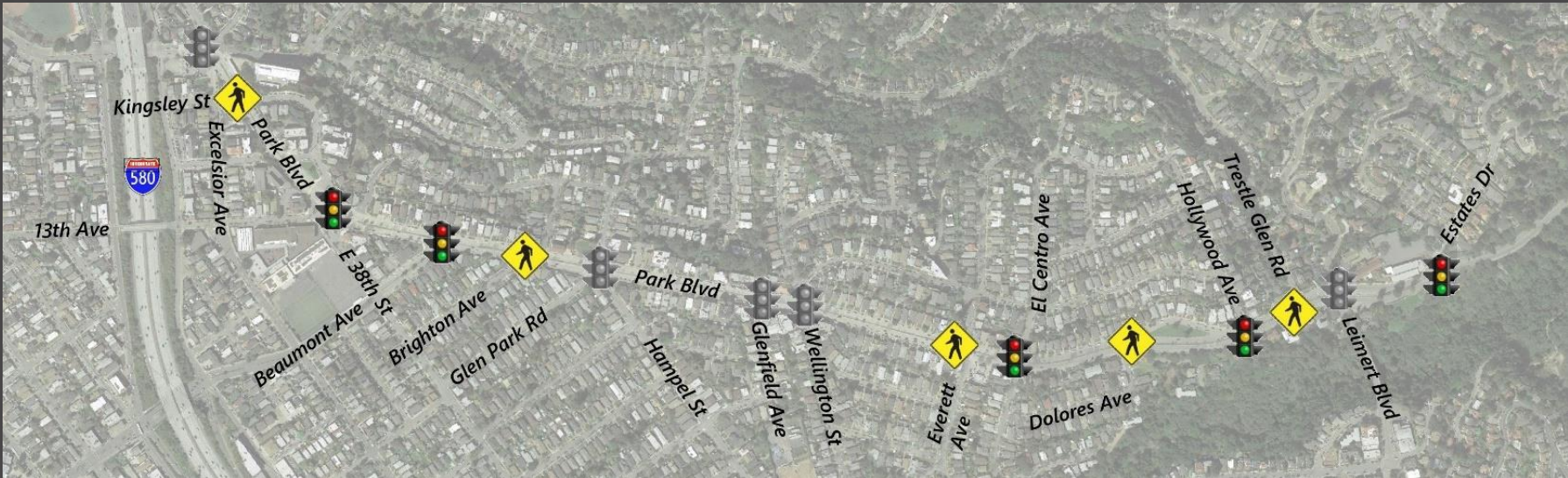
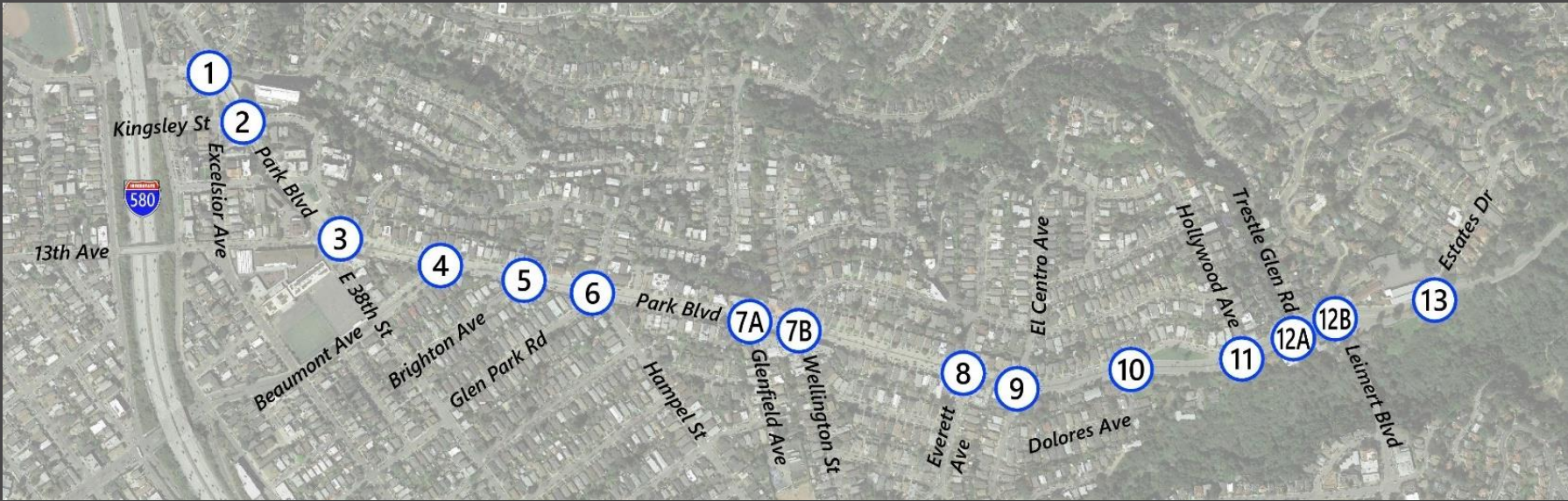
- Improve pedestrian crossings at key locations:
  - Increase visibility at crosswalks
  - Enhance crossings with bulb outs
- Maintain 2 lanes in each direction
- Compatible with corridor scenarios
- Do not reduce vehicle speeds or address pedestrian multiple threat
- Initial concepts would require:
  - Additional community dialog & prioritization
  - Significant funding for design development & construction



*Park Blvd & Hollywood Ave*

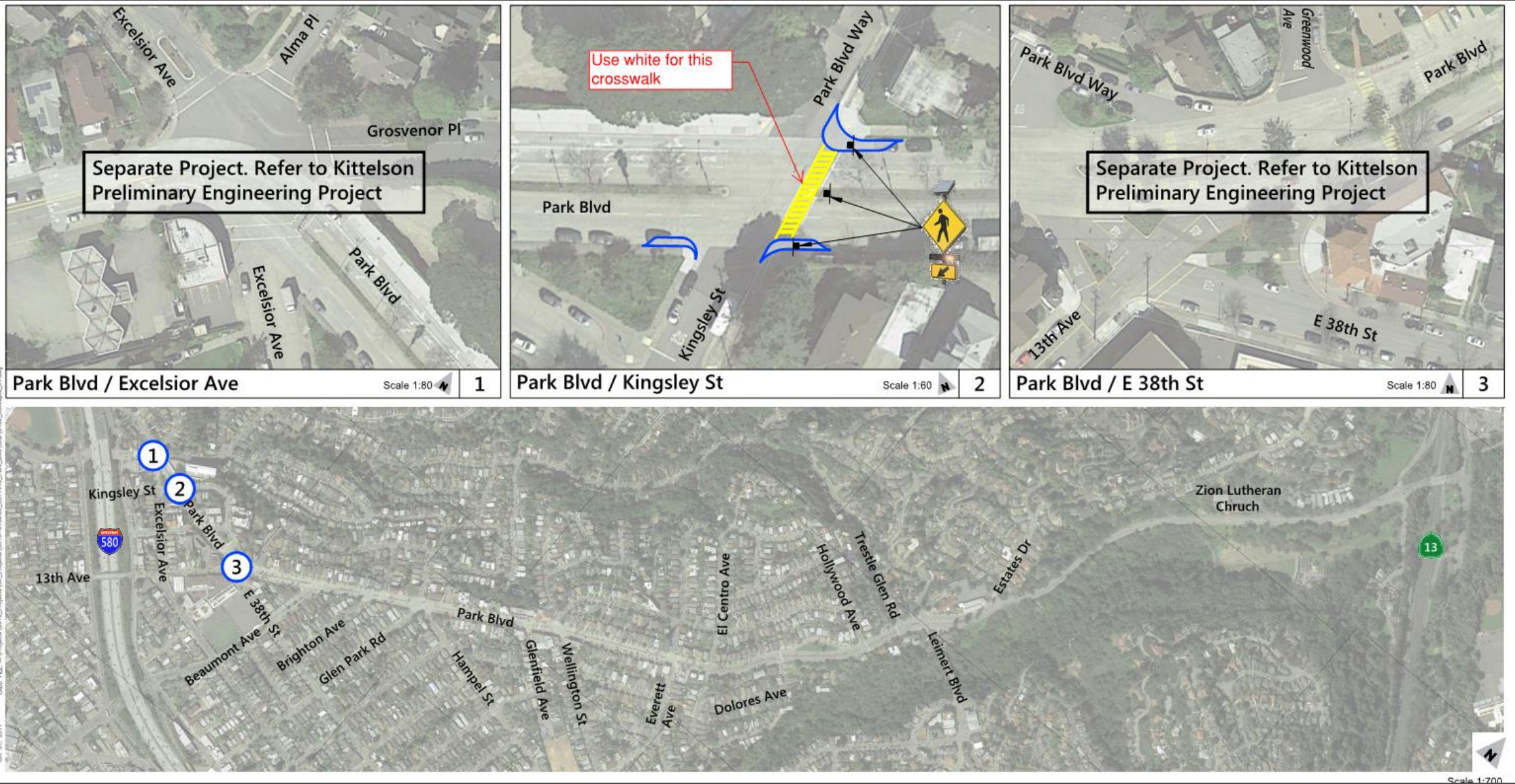


# Middle Park | Spot Improvements





# Middle Park | Spot improvements 1-3





# Middle Park | Funded Improvements

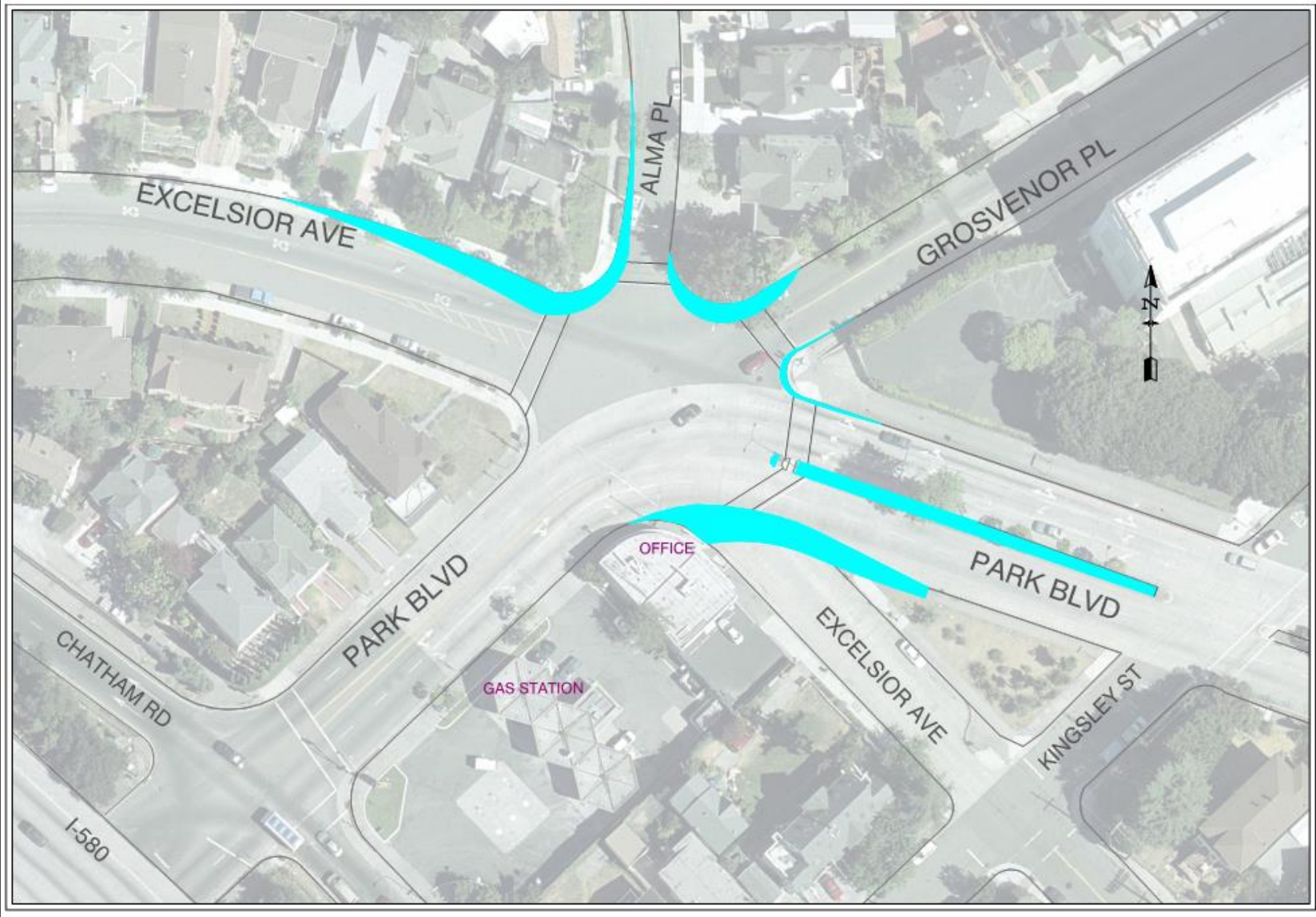
## Oakland Safe Routes to Schools: Crossing to Safety projects

- Serves Edna Brewer Middle School
- Park @ Excelsior Ave/  
Grosvenor Place
- Park @ 13th Ave/East 38th  
Street



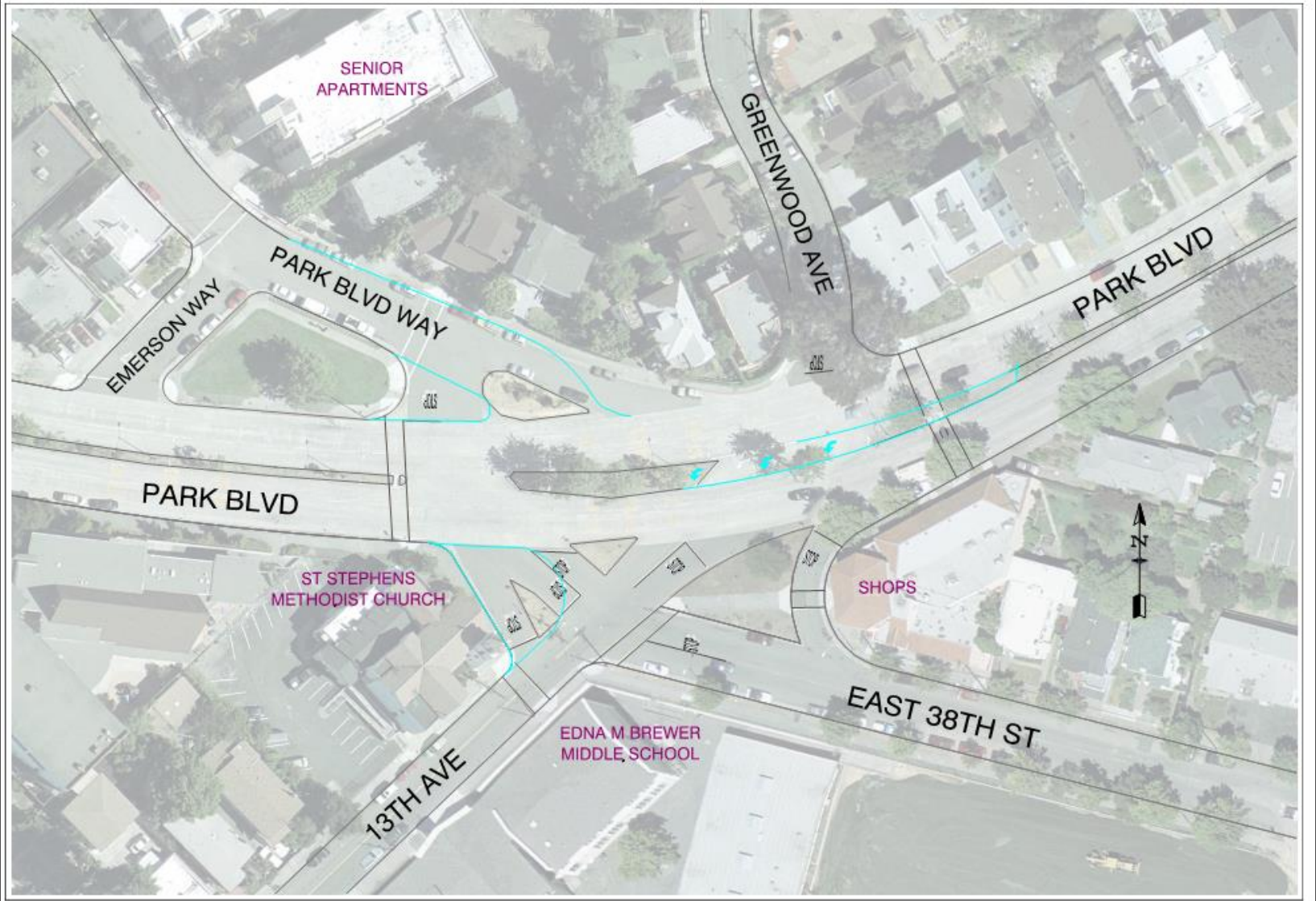
*Park Blvd/Grosvenor Place/Excelsior Ave*

# Middle Park | Funded Improvements

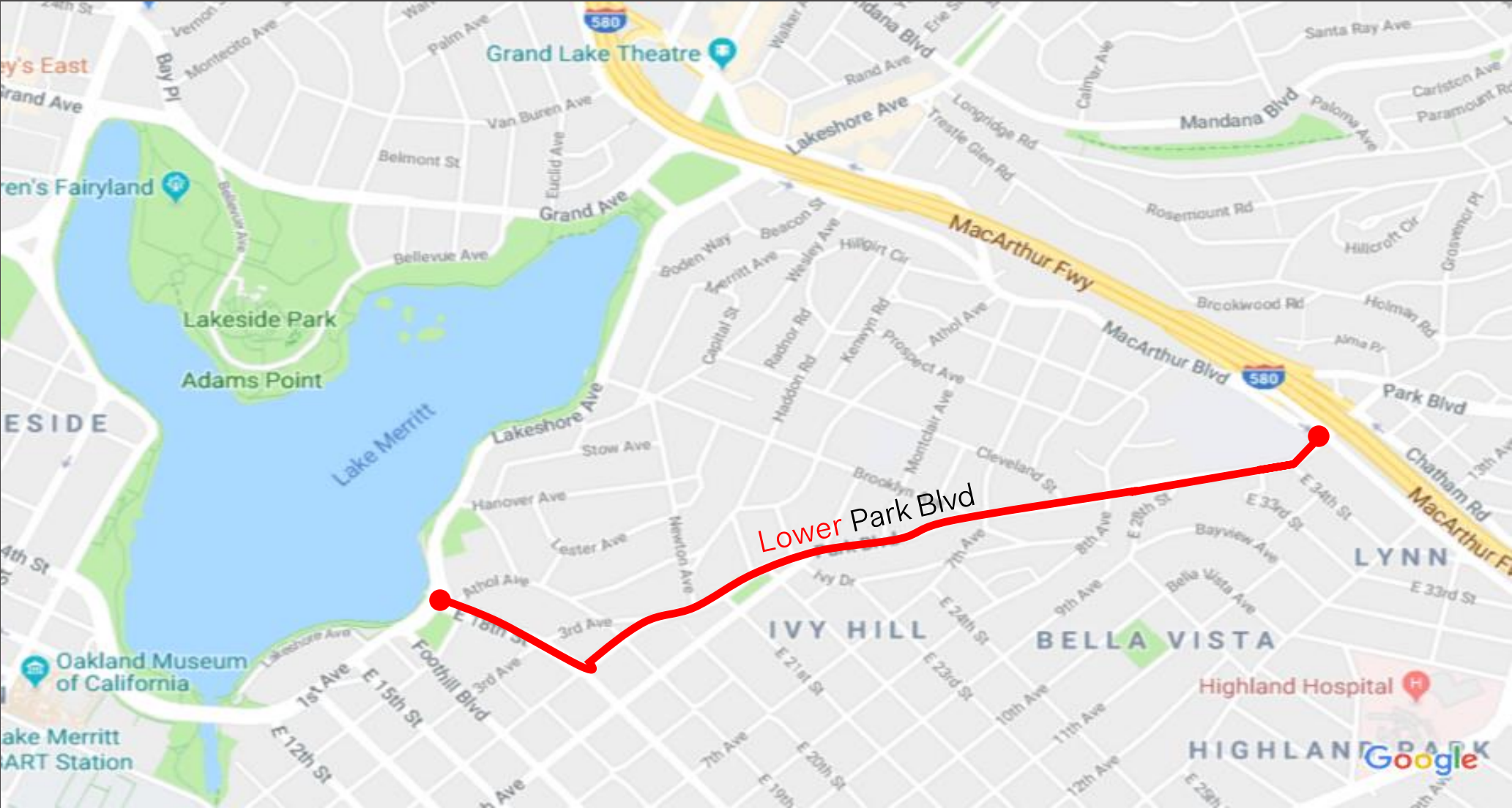




# Middle Park | Funded Improvements



# Lower Park Boulevard





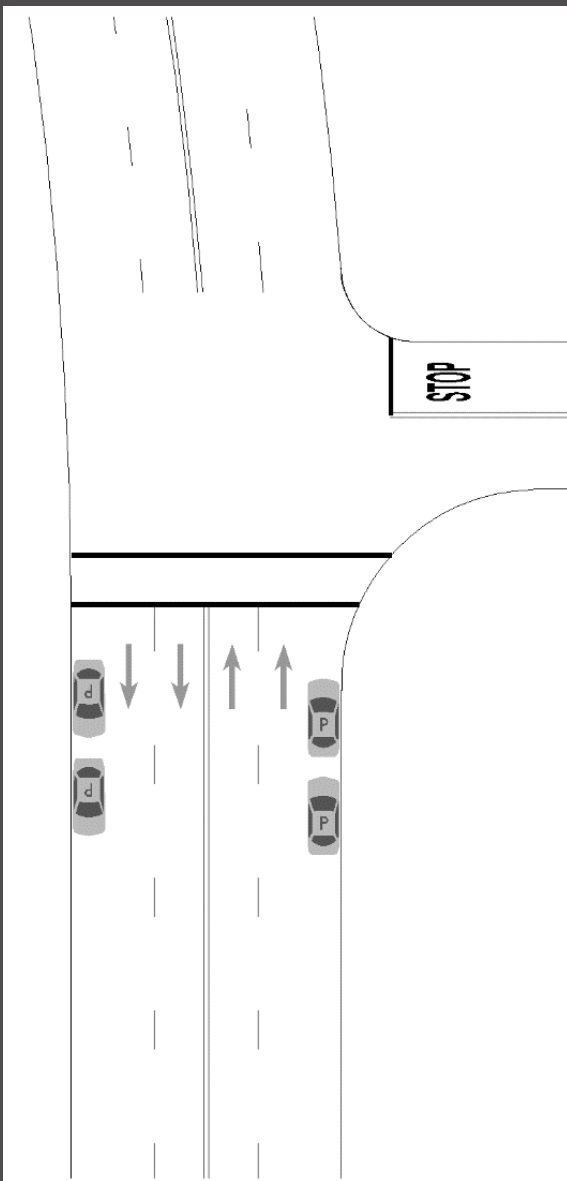
# Lower Park | Status

1. Proposed for a road diet  
(City Council priority)
2. Project goals
  - Improve pedestrian safety
  - Reduce speeding
  - Connect bicyclists to downtown, BART & Lake Merritt
3. Status: In detailed design
4. Community meeting next  
Wednesday, Jan 31, 6:30-8pm at  
Cleveland Elementary School

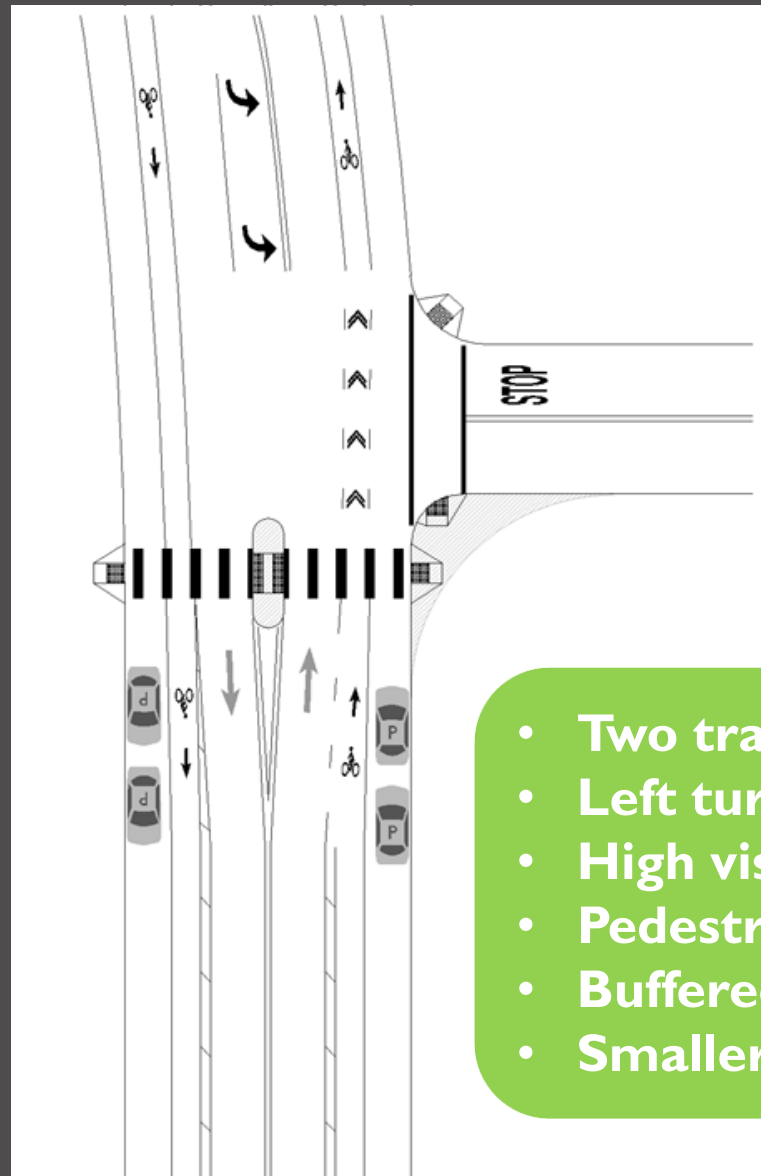


*Park Blvd & 5<sup>th</sup> Ave*

# Lower Park | Design Elements



Existing Conditions



Proposed Conditions

- Two travel lanes
- Left turn pockets
- High visibility crosswalks
- Pedestrian refuge islands
- Buffered bike lanes
- Smaller safer intersections

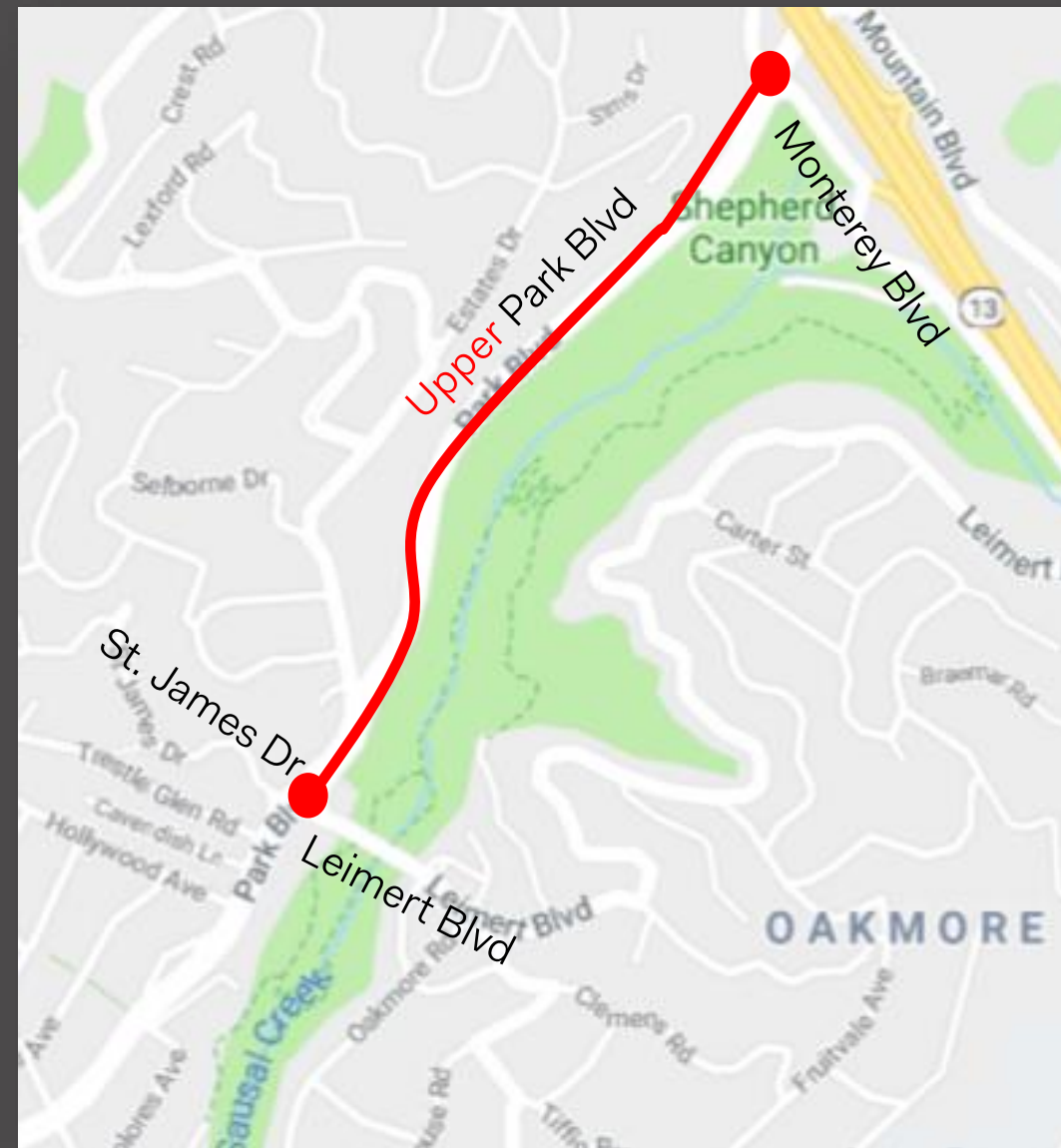


# Upper Park Boulevard

- Leimert Blvd at St James Dr to Monterey Blvd at Highway 13
- No businesses
- One driveway at Zion Lutheran Church
- One intersection at Estates Dr

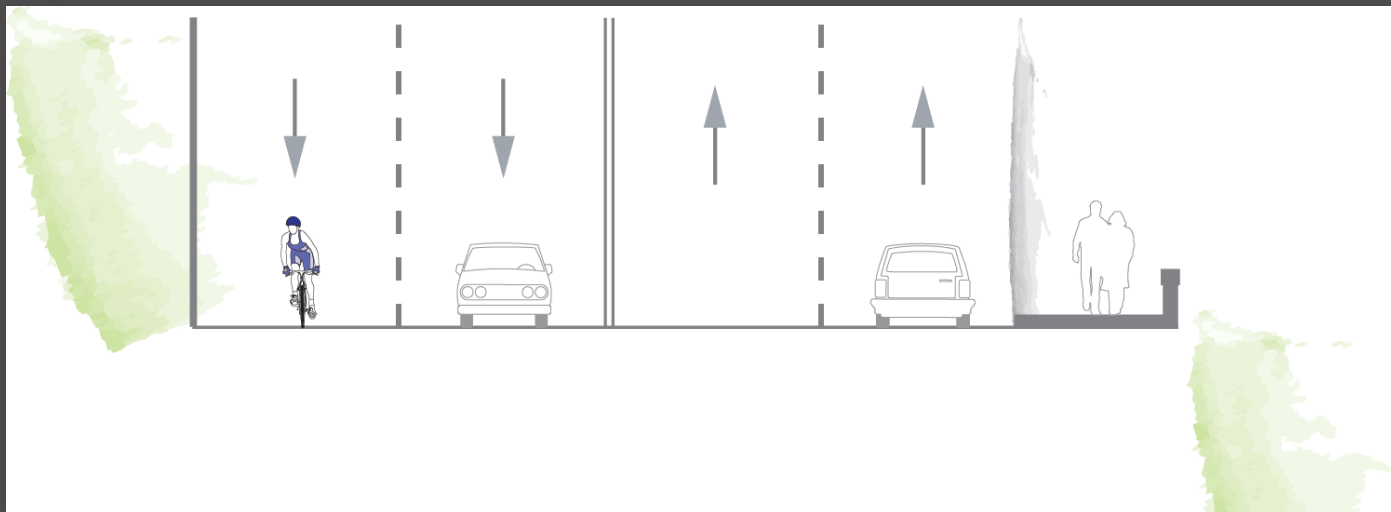
## Goals

- Reduce speeding
- Improve safety and access for pedestrians and bicyclists
- Various efforts to improve since 1993

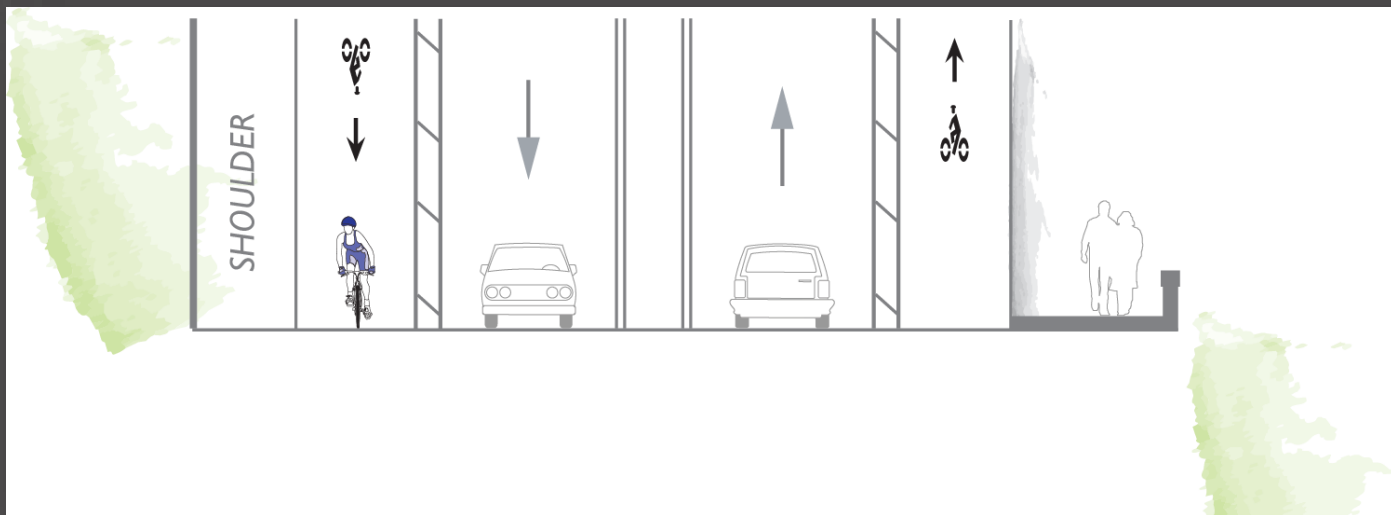


# Upper Park | Design Elements

Existing Conditions



Design for Discussion



- Two travel lanes
- Buffered bike lanes
- Ped/bicyclist path
- Spot improvements at Zion Lutheran Church and Estates Dr



# Next Steps | Lower & Upper Park Boulevard

## Lower Park

- Community meeting Jan 31, 2018, 6:30-8pm, Cleveland Elementary School
- Implementation being coordinated with repaving
- Construction anticipated summer 2019

## Upper Park

- Develop concept plans for possible improvements
- Engage stakeholders to evaluate alternatives
- Low-cost: striping-only changes delivered with paving
- High-cost: construct a pedestrian/bicycle path



# Next Steps | Middle Park Boulevard

Tonight/thru Feb 9, 2018: let us know what you think about spot improvements & lane reduction/traffic signal concepts.

## Spot improvements

- What are your priority locations?
- Community field walk (summer 2018)
- Finalize conceptual designs/estimates (fall 2018)
- Search for funding

## Lane reconfiguration/Traffic signals

- Schedule community workshop





# Questions & Comments (yellow cards)

- Give us your questions & comments.
- Enjoy some refreshments while we sort them.
- We'll read them aloud and will respond.
- Fill out another card if you have a follow-up question.
- We will stay until all of your questions are answered.



Park Boulevard Corridor | Pedestrian, Bicycle and School Safety Study  
Wednesday, January 24, 2018 | Park Boulevard Presbyterian Church

## Questions or Comments

Name: \_\_\_\_\_ Email: \_\_\_\_\_

Address or Organization: \_\_\_\_\_

- |  |  |   |                                  |
|--|--|---|----------------------------------|
| <input type="checkbox"/> Traffic study   | <input type="checkbox"/> Middle Park road diet | <input type="checkbox"/> Upper Park                 | <input type="checkbox"/> Process |
| <input type="checkbox"/> Safety concerns | <input type="checkbox"/> Middle Park spot impr | <input type="checkbox"/> Lower Park (bring 1/31/18) |                                  |

Comment/Question: \_\_\_\_\_

---

---

---

# Park Boulevard Study | Contact information

Garrett Gritz, Consulting Project Manager

Diablo Engineering Group

510-813-3885

[garrett@diabloengineeringgroup.com](mailto:garrett@diabloengineeringgroup.com)

Project website

[www2.oaklandnet.com/OAK061777](http://www2.oaklandnet.com/OAK061777)