

LEGEND

TS

TRAFFIC SIGNAL

DI

DRAINAGE INLET

DW /

DRIVEWAY

PEDESTRIAN SAFETY ISLAND.
6' WIDE UNLESS OTHERWISE NOTED.
30' MINIMUM LENGTH.
8' WIDE FLUSH PEDESTRIAN
CUT-THROUGH.

CITY OF OAKLAND
DEPARTMENT OF TRANSPORTATION
250 FRANK H. OGAWA PLAZA, SUITE 4344 * OAKLAND CA, 94612
(510) 238-3466 * FAX (510) 238-7415

E 18TH ST
LAKESHORE AVE TO PARK BLVD

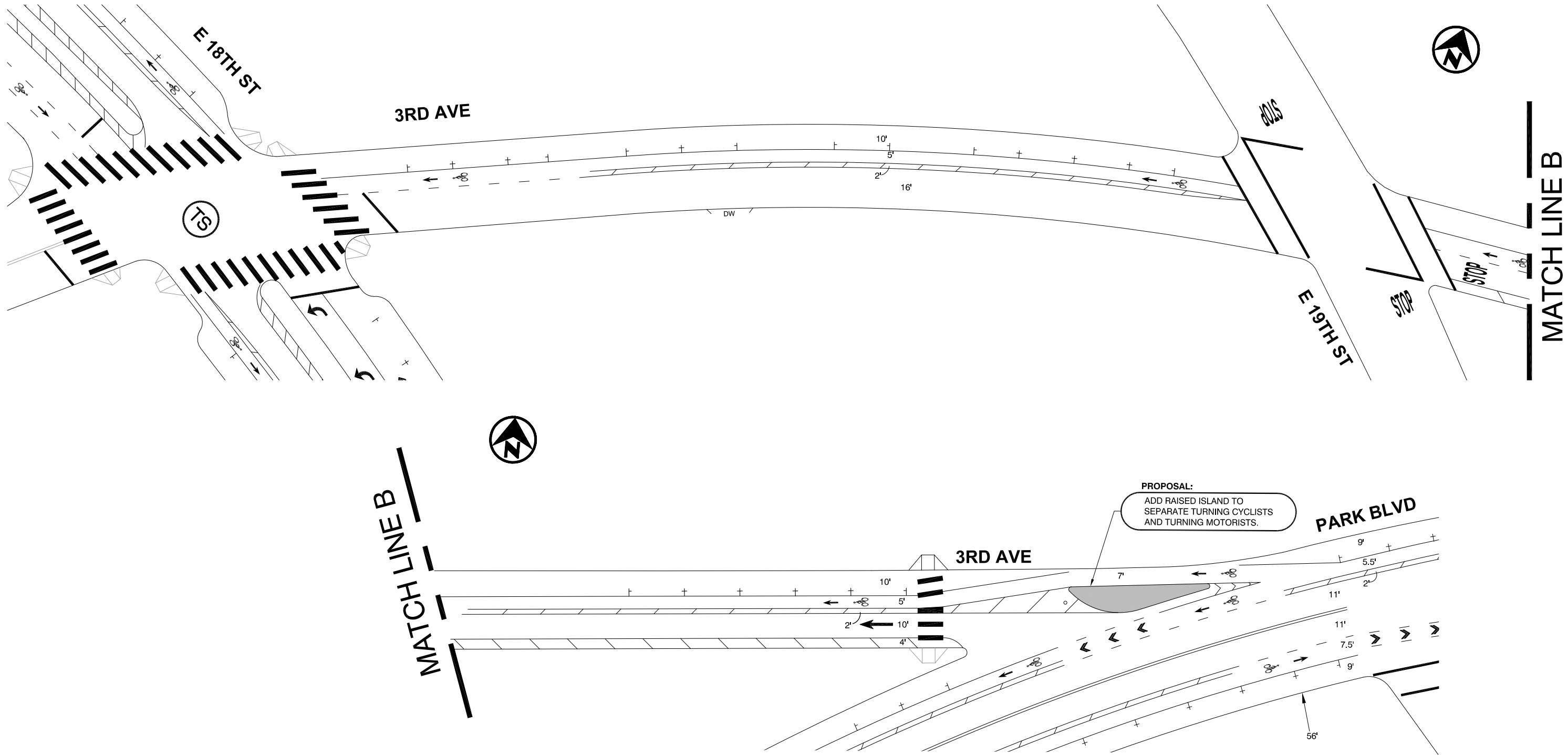
REVIEWED BY	No.	DATE	BY	REFERENCE
DESIGNED BY	JASON PATTON			
DRAWN BY	DEP			

PROPOSED
IMPROVEMENTS

PROJECT NO. TBD	
SCALE: 1" = 40'	SHEET NO.
DATE: 1/31/2018	1 OF 7

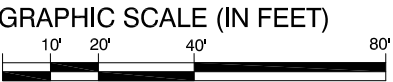
DRAWING NAME: C:\projects\Oakland\pwa\Transportation\Bike-Ped\Program\Projects\Bikeways-striping\E-18thSt\E18thSt_LakeshoreAve-ParkBlvd.dwg
PLOT DATE: 01/31/2018
PLOT BY: [redacted]
PLOTED BY: [redacted]

PROJECT TITLE



LEGEND

	TRAFFIC SIGNAL		PEDESTRIAN SAFETY ISLAND. 6' WIDE UNLESS OTHERWISE NOTED. 30' MINIMUM LENGTH. 8' WIDE FLUSH PEDESTRIAN CUT-THROUGH.
	DRAINAGE INLET		
	DRIVEWAY		



CITY OF OAKLAND

DEPARTMENT OF TRANSPORTATION
250 FRANK H. OGAWA PLAZA, SUITE 4344 * OAKLAND CA, 94612
(510) 238-3466 * FAX (510) 238-7415

3RD AVENUE
E18TH ST - PARK BLVD

REVIEWED BY	No.	DATE	BY	REFERENCE
DESIGNED BY				
DRAWN BY				

JASON PATTON

DEP

PROPOSED
IMPROVEMENTS

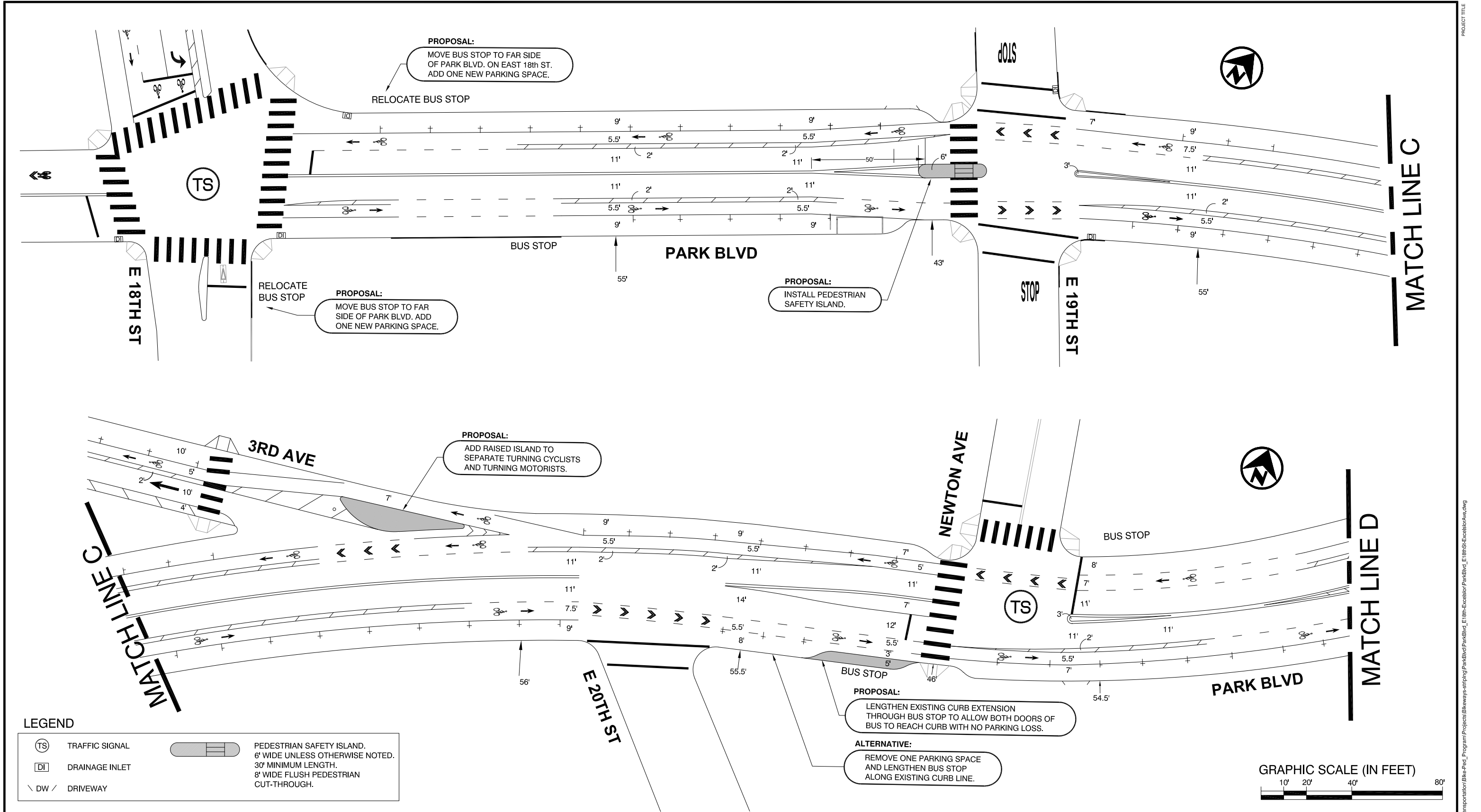
PROJECT NO.
TBD

SCALE: 1" = 40'

SHEET NO.

DATE: 1/31/2018

2 OF 7



CITY OF OAKLAND

DEPARTMENT OF TRANSPORTATION
250 FRANK H. OGAWA PLAZA, SUITE 4344 * OAKLAND CA, 94612
(510) 238-3466 * FAX (510) 238-7415

**PARK BLVD
E18TH ST - CHATHAM RD**

REVIEWED BY

DESIGNED BY

DRAWN BY

JASON PATTON

DEP

No.	DATE	BY	REFERENCE

**PROPOSED
IMPROVEMENTS**

PROJECT NO.

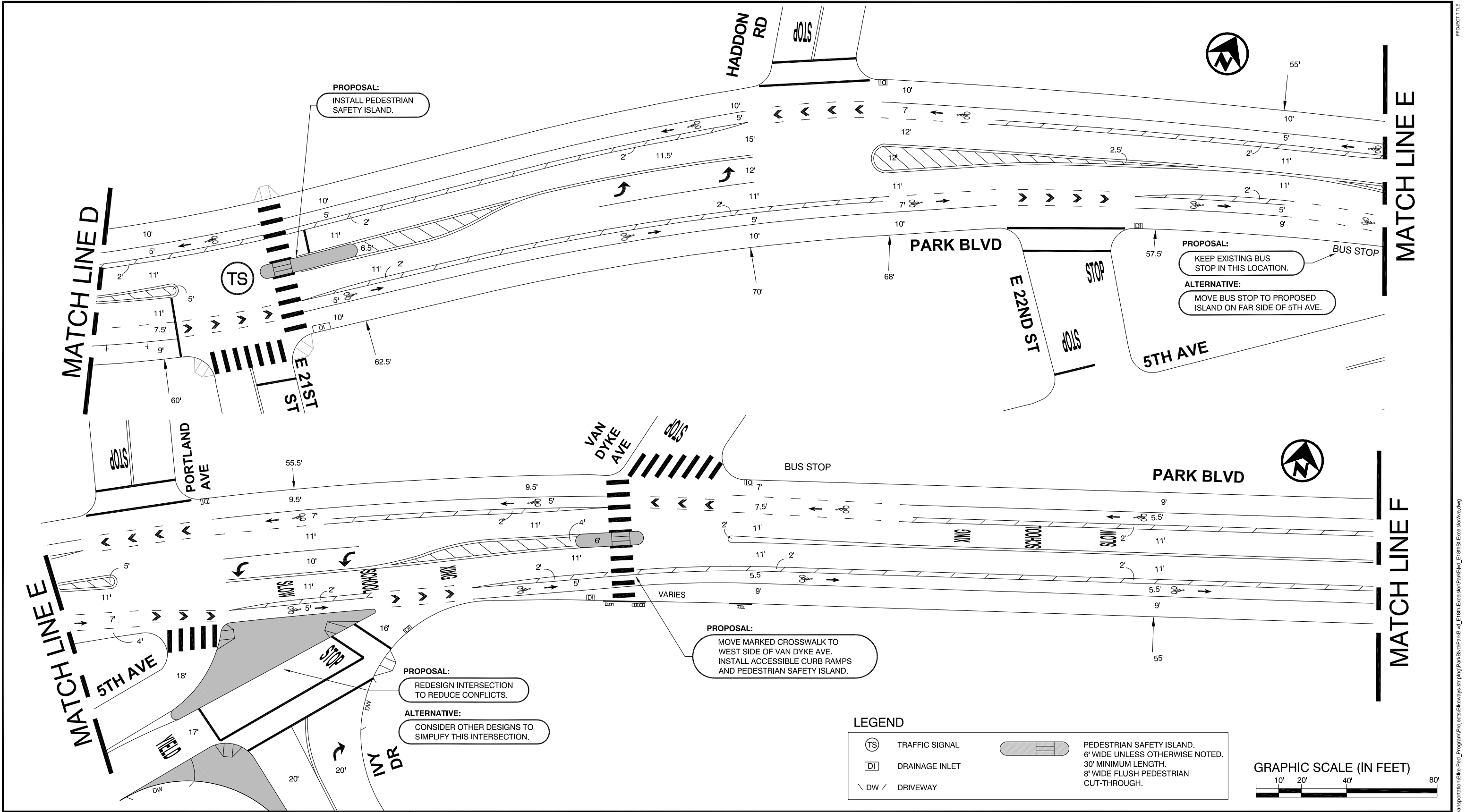
TBD


SCALE: 1" = 40'

DATE: 1/31/2018

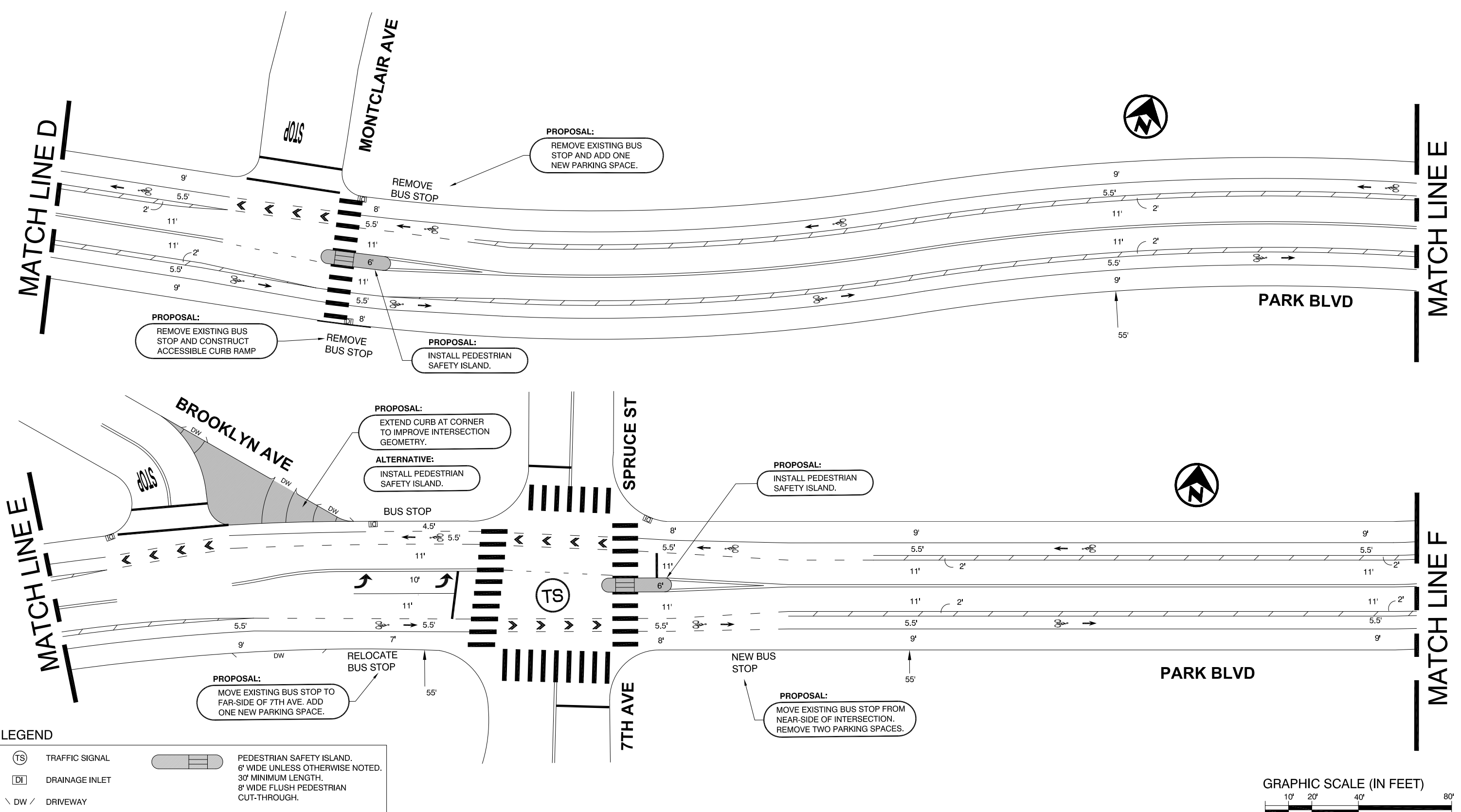
SHEET NO.

3 OF 7



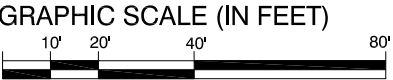
 <div>CITY OF OAKLAND DEPARTMENT OF TRANSPORTATION 250 FRANK H. OGAWA PLAZA, SUITE 4344 * OAKLAND CA, 94612 (510) 238-3466 * FAX (510) 238-7415</div>	<div>PARK BLVD E18TH ST - CHATHAM RD</div>	REVIEWED BY	No.	DATE	BY	REFERENCE	PROPOSED IMPROVEMENTS	PROJECT NO. TBD	
		DESIGNED BY JASON PATTON						SCALE: 1" = 40'	SHEET NO.
		DRAWN BY DEP						DATE: 1/31/2018	4 OF 7

DRAWING NAME: \\oakland\pva\Transportation\Bikes-Ped_Program\Projects\Bikeways-striping\ParkBlvd_E18thSt-EvanstonAve.dwg
PLOT DATE: 01-31-18
PLOTTED BY: penejd



LEGEND

	TRAFFIC SIGNAL		PEDESTRIAN SAFETY ISLAND. 8' WIDE UNLESS OTHERWISE NOTED. 30' MINIMUM LENGTH. 8' WIDE FLUSH PEDESTRIAN CUT-THROUGH.
	DRAINAGE INLET		
	DRIVEWAY		



CITY OF OAKLAND

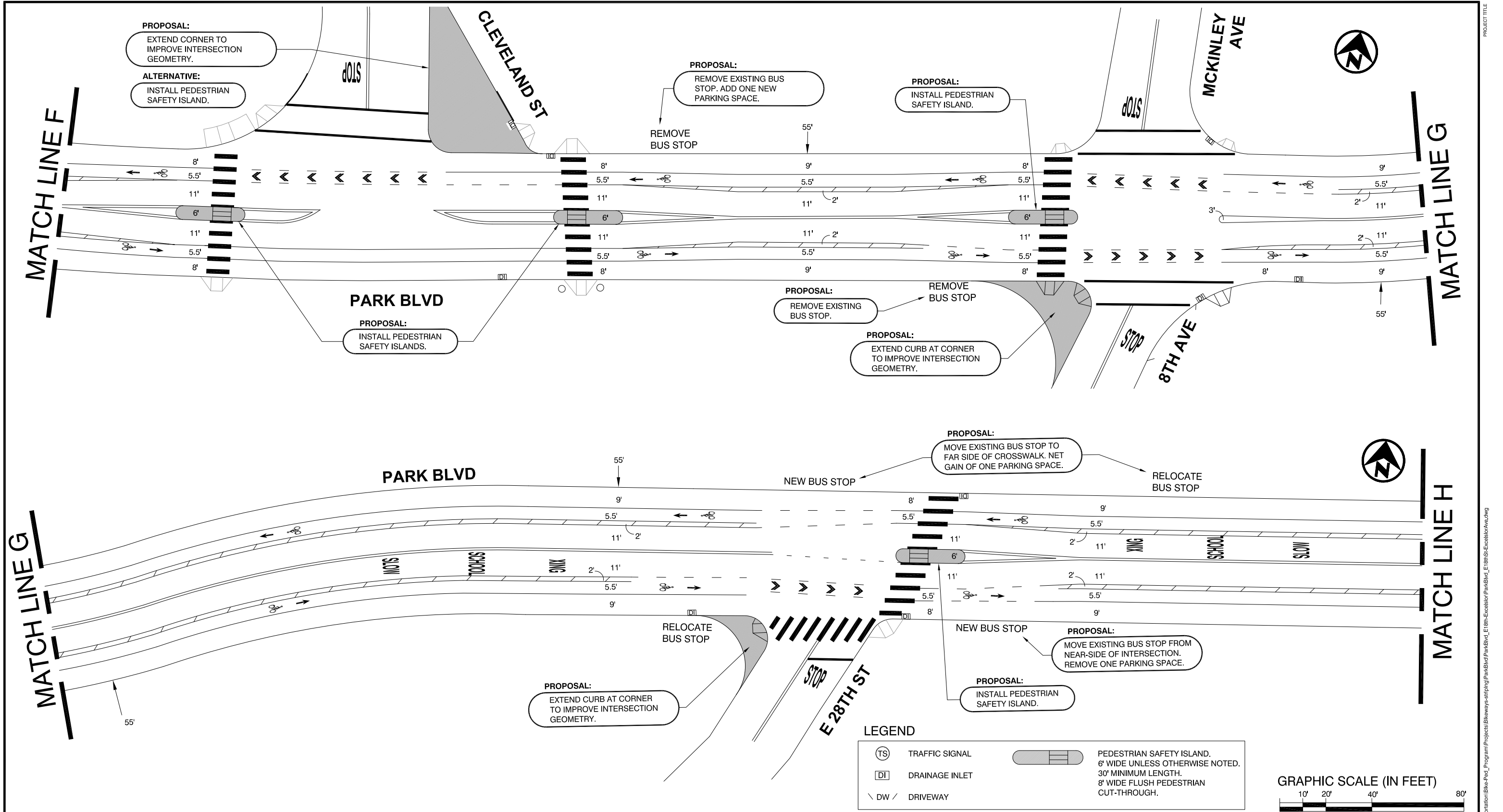
DEPARTMENT OF TRANSPORTATION
250 FRANK H. OGAWA PLAZA, SUITE 4344 * OAKLAND CA, 94612
(510) 238-3466 * FAX (510) 238-7415

PARK BLVD
E18TH ST - CHATHAM RD

REVIEWED BY	No.	DATE	BY	REFERENCE
DESIGNED BY			JASON PATTON	
DRAWN BY			DEP	

PROPOSED
IMPROVEMENTS

PROJECT NO. TBD	
SCALE: 1" = 40'	SHEET NO.
DATE: 1/31/2018	5 OF 7



CITY OF OAKLAND

DEPARTMENT OF TRANSPORTATION
250 FRANK H. OGAWA PLAZA, SUITE 4344 * OAKLAND CA, 94612
(510) 238-3466 * FAX (510) 238-7415

**PARK BLVD
E18TH ST - CHATHAM RD**

REVIEWED BY	No.	DATE	BY	REFERENCE
DESIGNED BY			JASON PATTON	
DRAWN BY			DEP	

**PROPOSED
IMPROVEMENTS**

PROJECT NO.

TBD

SCALE: 1" = 40'

SHEET NO.

DATE: 1/31/2018

6 OF 7

MATCH LINE H

PARK BLVD

PROPOSAL:

REMOVE EXISTING BUS STOP. ADD TWO NEW PARKING SPACES.

REMOVE BUS STOP

PROPOSAL:

INSTALL PEDESTRIAN SAFETY ISLAND.

PROPOSAL:

REMOVE EXISTING BUS STOP. ADD ONE NEW PARKING SPACE.

REMOVE BUS STOP

NOTE:

EASTBOUND BIKE LANE ASSUMES REMOVAL OF ONE EXISTING PARKING SPACE.

MATCH LINE I

E 34TH ST

E 33RD ST

MATCH LINE I

PROPOSAL:

MOVE EXISTING BUS STOP CLOSER TO CROSSWALK.

PROPOSAL:

EXTEND CURB AT CORNER TO IMPROVE INTERSECTION GEOMETRY. ADD PEDESTRIAN SAFETY ISLAND.

RELOCATE BUS STOP

NEW BUS STOP

TS

BUS STOP

MAC-ARTHUR BLVD

PARK BLVD

CHATHAM RD

LEGEND

TS

TRAFFIC SIGNAL

DI

DRAINAGE INLET

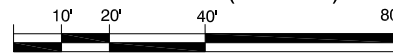
DW

DRIVEWAY



PEDESTRIAN SAFETY ISLAND. 6' WIDE UNLESS OTHERWISE NOTED. 30' MINIMUM LENGTH. 8' WIDE FLUSH PEDESTRIAN CUT-THROUGH.

GRAPHIC SCALE (IN FEET)



CITY OF OAKLAND

DEPARTMENT OF TRANSPORTATION
250 FRANK H. OGAWA PLAZA, SUITE 4344 * OAKLAND CA, 94612
(510) 238-3466 * FAX (510) 238-7415

PARK BLVD
E18TH ST - CHATHAM RD

REVIEWED BY

DESIGNED BY

DRAWN BY

JASON PATTON

DEP

No.

DATE

BY

REFERENCE

PROPOSED IMPROVEMENTS

PROJECT NO.

TBD

SCALE: 1" = 40'

DATE: 1/31/2018

SHEET NO.

7 OF 7

DRAWING NAME: \\oakland\pva\Transportation\Bike-Ped_Program\Projects\Bikeways-striping\ParkBlvd_E18thSt-EssexAve.dwg
PLOT DATE: 01-31-18
PLOTTED BY: peneqd