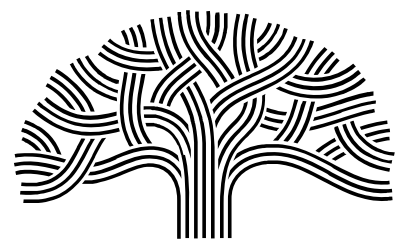


Sunday Parking Metering

Department of Transportation



CITY OF
OAKLAND



Background

- Parking meters encourage vehicle turnover, allowing access to local businesses.
- Prior to January 4th, 2026, parking meters were not enforced on Sundays.
- Free Sunday parking has historical ties to outdated blue laws, which prohibited business activities on Sundays to promote rest and religious observance.
- Today, Sundays are among the busiest days for businesses. Updating meter hours helps ensure parking is available when demand is the highest, including weekends.

Problem statement

Parking is **too full** on Sundays, leading to a frustrating customer experience and an abundance of illegal and unsafe parking activities like double parking and parking in red zones, cross walks and bike lanes.

We define parking as **too full** when greater than **85%** of available spaces are occupied.

How often is parking too full?

Parking is Too Full % by District (Sat vs. Sun, hourly, 10am-8pm)		
	Saturday	Sunday
Fruitvale	50%	58%
Grand Lake (Farmer's Market on Sat.)	54%	34%
Montclair (Farmer's Market on Sun.)	43%	52%
Rockridge	38%	43%
Temescal	34%	46%
Average	44%	47%

On average,
Parking too full
47% of the time on
Sundays vs 44% on
Saturdays

What else does the data show?

Parking Occupancy by District (Sat vs. Sun)		
	Saturday	Sunday
Fruitvale	91%	106%
Grand Lake (Farmer's market on Sat.)		
Lower	97%	88%
Upper	63%	43%
Montclair (Farmer's market on Sun.)		
Core	81%	90%
Outer	60%	64%
Rockridge		
Alcatraz to Claremont	101%	110%
Claremont to Chabot	64%	63%
Chatbot to Freeway	62%	58%
Freeway to Kales	84%	87%
Kales to Broadway	73%	60%
Temescal		
	58%	68%

On Sundays, some areas are more than 100% full, meaning every space is occupied and vehicles are parked illegally

Solution: Demand-responsive parking pricing

- **Goal:** Charge the lowest possible rate to ensure 1-2 spaces available per block (65-85% occupancy), ensuring access to local businesses.
- With Sunday metering, this can now be applied on Sundays. Prices will be raised in high demand areas, and lowered in areas with less demand.

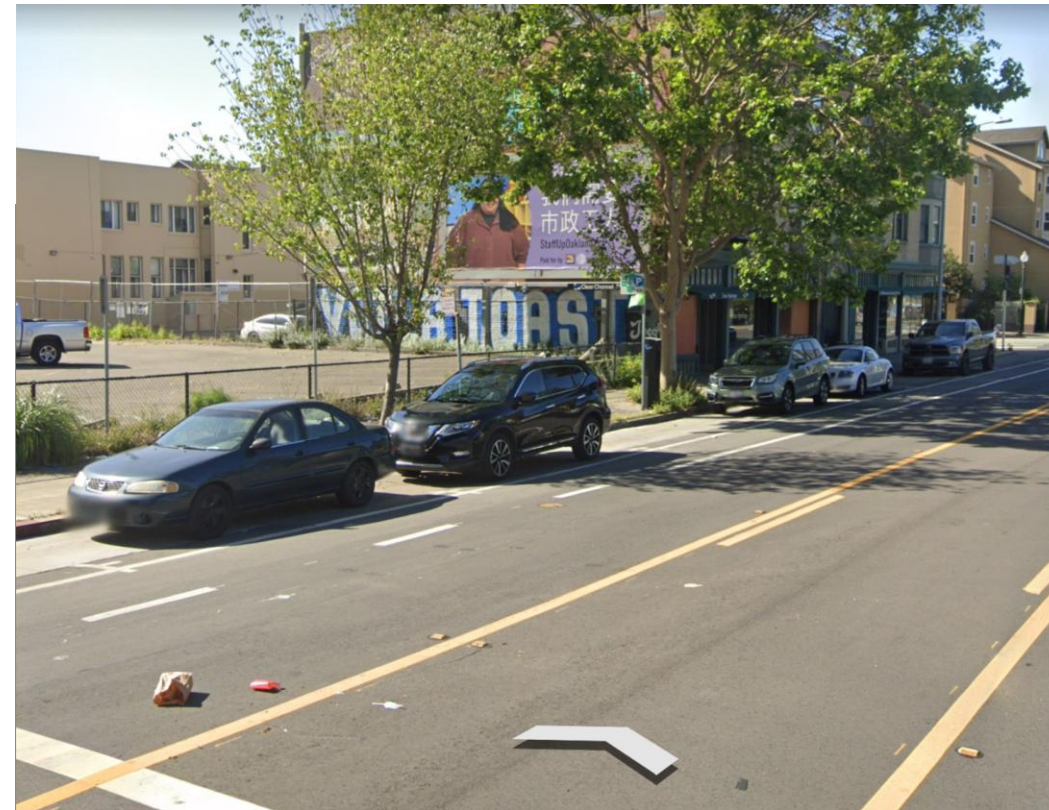
Demand-responsive parking pricing

Too empty



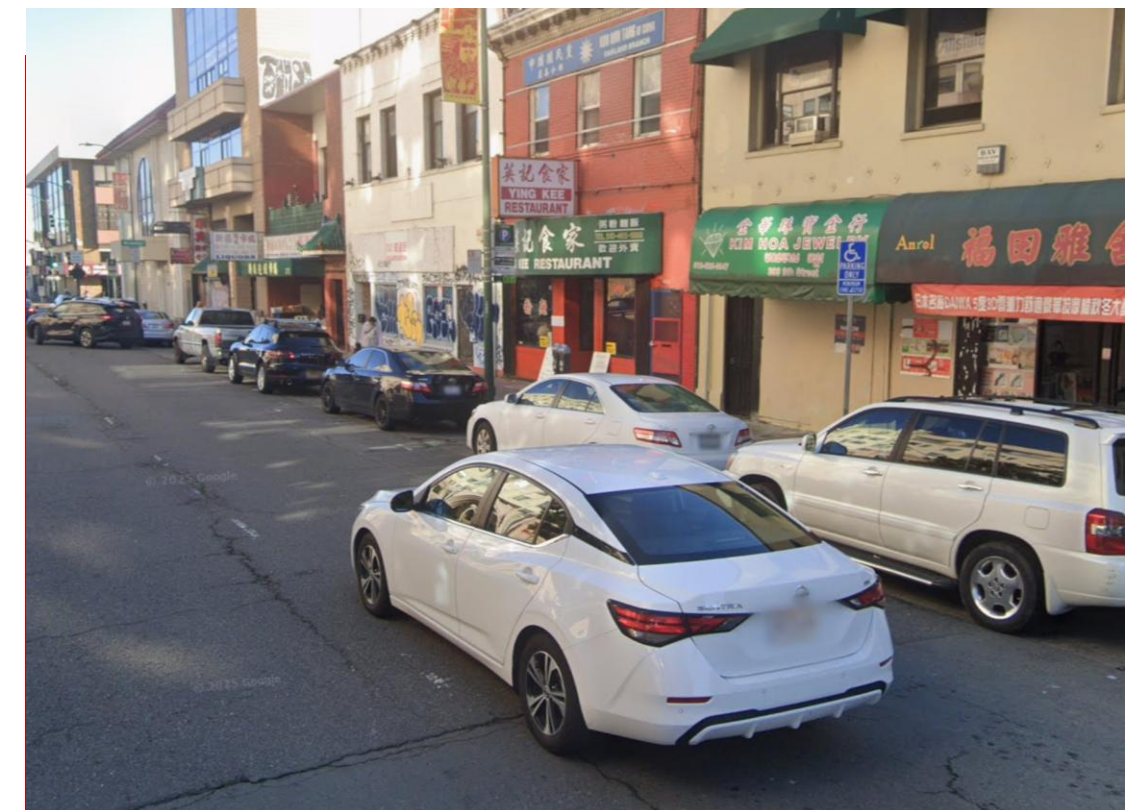
Lower rates

Just right



Don't change rates

Too full



Raise rates

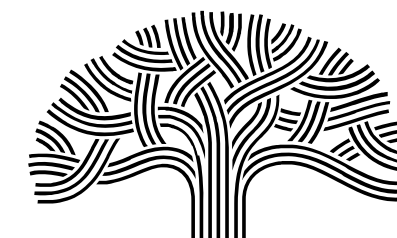
Peer cities

What other California cities meter parking on Sundays?

- Sacramento
- Walnut Creek
- Port of San Diego
- Santa Monica
- Long Beach
- San Francisco (some areas)
- Santa Cruz
- Monterey
- Los Angeles (in progress)

Timeline

- **January 4th, 2026:** Parking meter enforcement on Sundays began. Violators are provided with a multi-lingual warning flyer.
- **April 12th, 2026:** Grace period ends, any violations after April 12th, 2026 will result in a citation.



CITY OF
OAKLAND

LEARN MORE

To learn more about this issue, visit our website:

[OAKLANDCA.GOV/Public-Safety-
Streets/Parking-Vehicles](https://oaklandca.gov/Public-Safety-Streets/Parking-Vehicles)