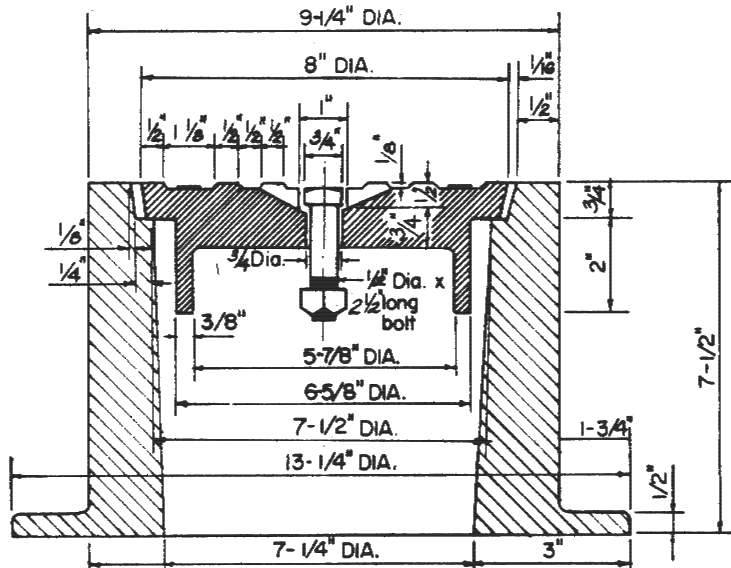
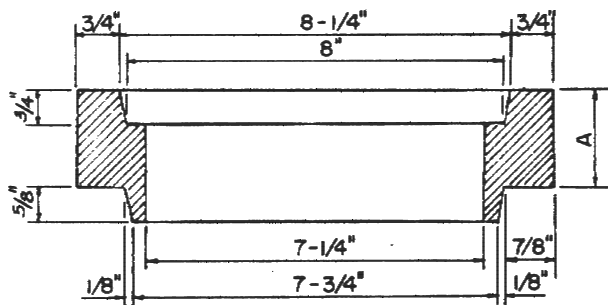


PLAN OF CASTING

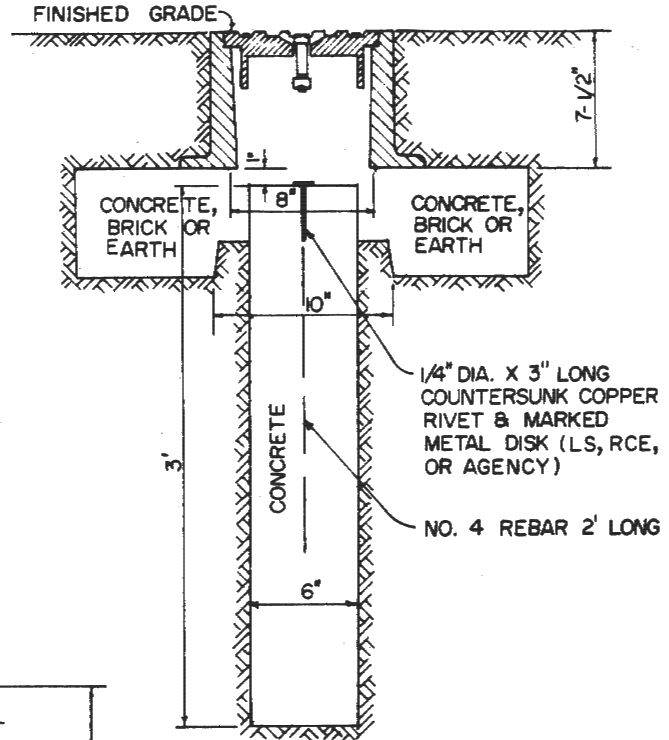


SECTION OF CASTING



A = 1-1/2", 2", 2-1/2", OR 3"

SECTION OF RISER RINGS



SECTION OF MONUMENT

NOTE:

ALL DIMENSIONS TO BE ACCURATE
WITHIN 1/16 INCH.

APPROXIMATE WEIGHTS:

FRAME = 59.5 LBS.

COVER = 15.5 LBS.

NOTE: THIS PLAN IS NOT A LEGAL ENGINEERING DOCUMENT BUT AN ELECTRONIC DUPLICATE. THE SIGNED CITY OF OAKLAND STANDARD DETAILS FOR PUBLIC WORKS CONSTRUCTION IS AVAILABLE FOR PURCHASE FROM THE CONTRACT ADMINISTRATION DEPARTMENT.

CITY OF OAKLAND

DESIGN AND CONSTRUCTION SERVICES DEPARTMENT



MONUMENT

ENGINEERING DESIGN MANAGER

DATE : JANUARY 2002

REV. DATE : _____

DWG.

S-9