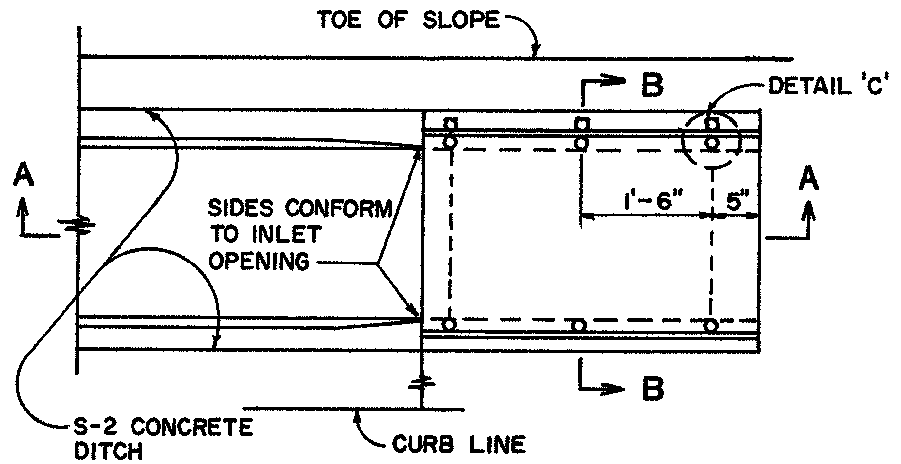
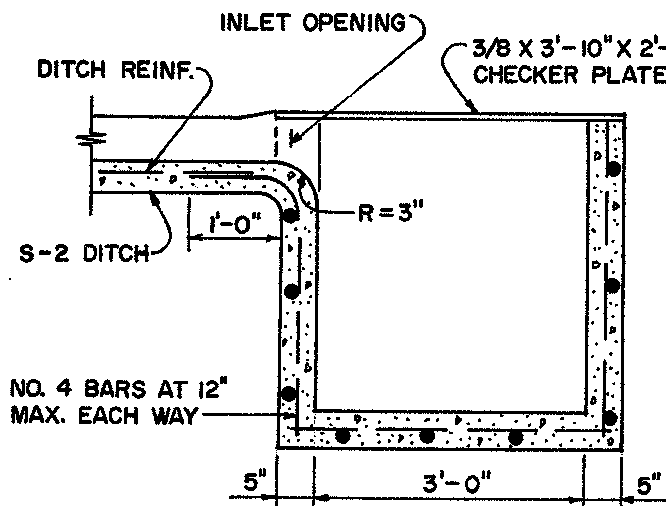


**INLET OPENING**

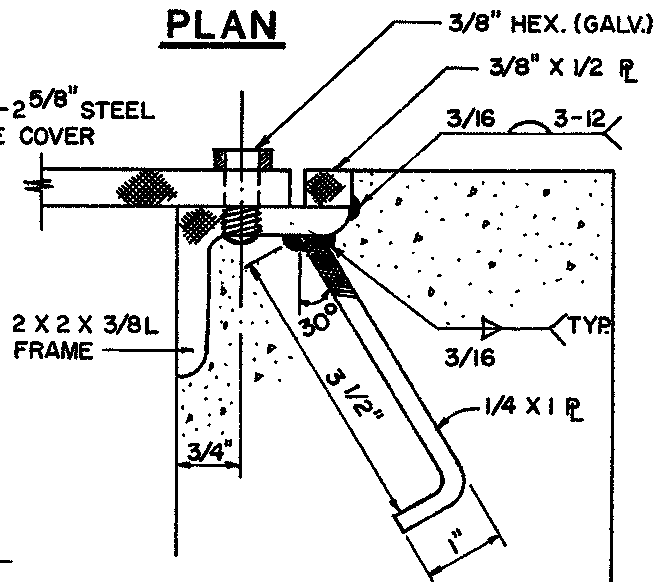


**PLAN**



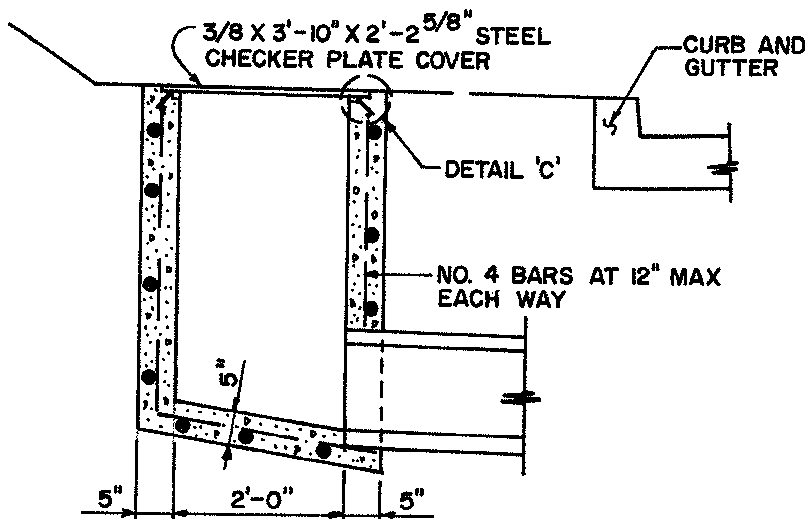
**SECTION A-A**

FRAME, COVER AND BOLTS SHALL BE HOT - DIP GALVANIZED



**DETAIL 'C'**

FRAME, COVER AND BOLTS SHALL BE HOT - DIP GALVANIZED



**SECTION B-B**

NOTE: THIS PLAN IS NOT A LEGAL ENGINEERING DOCUMENT BUT AN ELECTRONIC DUPLICATE. THE SIGNED CITY OF OAKLAND STANDARD DETAILS FOR PUBLIC WORKS CONSTRUCTION IS AVAILABLE FOR PURCHASE FROM THE CONTRACT ADMINISTRATION DEPARTMENT.

CITY OF OAKLAND

DESIGN AND CONSTRUCTION SERVICES DEPARTMENT



**S-2 INLET**  
(REINFORCED CONCRETE)

ENGINEERING DESIGN MANAGER

DATE: JANUARY 2002  
REV. DATE: \_\_\_\_\_

DWG.  
D-10